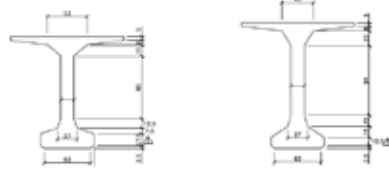


DEFINICION GEOMETRICA
VIGA BN-80
0.833 T/m.A

DEFINICION GEOMETRICA
VIGA BN-100
0.967 T/m.A

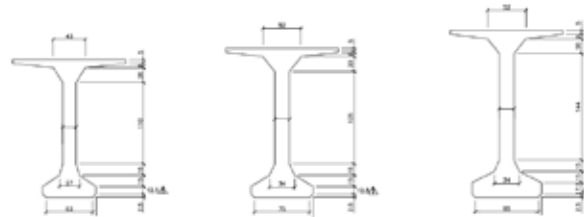
DEFINICION GEOMETRICA
VIGA BN-120
1.087 T/m.A

DEFINICION GEOMETRICA
VIGA BN-130
1.266 T/m.A



DEFINICION GEOMETRICA
VIGA BN-150
1.261 T/m.A

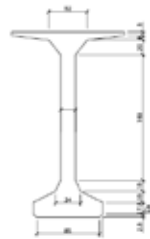
DEFINICION GEOMETRICA
VIGA BN-170
1.451 T/m.A



DEFINICION GEOMETRICA
VIGA BN-180
1.523 T/m.A

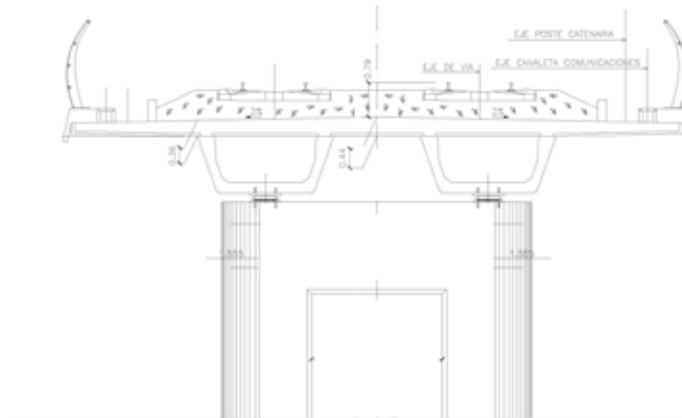
DEFINICION GEOMETRICA
VIGA BN-200
1.783 T/m.A

DEFINICION GEOMETRICA
VIGA BN-220
2.052 T/m.A

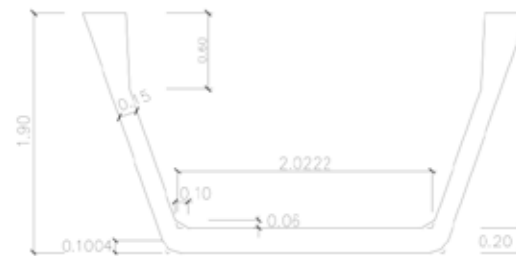


DEFINICION GEOMETRICA
VIGA BN-250
2.177 T/m.A

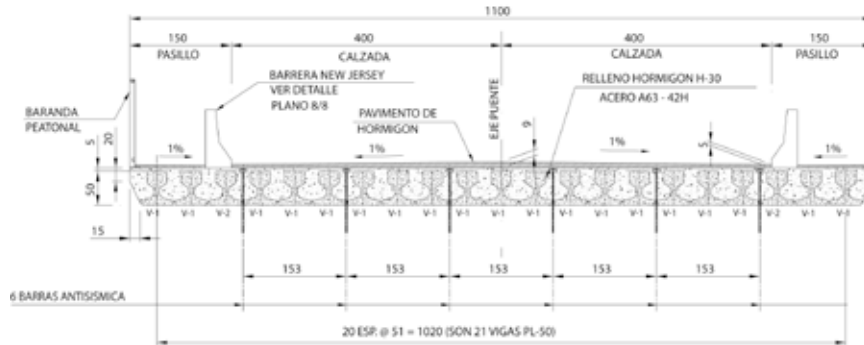




DEFINICION GEOMETRICA
VIGA BU-190



SECCION TRANSVERSAL PUENTE CON VIGA PTR



VIGAS SERIE PTR

